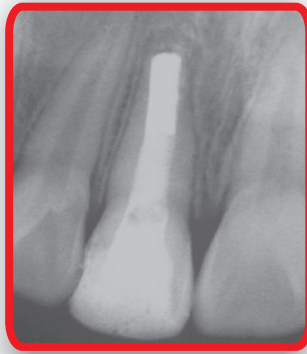


ENDOPEX

ENDOPEX is recommended for the following applications:

Temporary or permanent root canal treatment

- Vital pulpotomies in deciduous teeth
- Apexification and Apexogenesis
- Stimulation of apexification and hard tissue formation
- Traumatic injuries
- Root resorption treatment including primary teeth



Advantages

- Excellent antibacterial effect and radiopacity
- Premixed paste
- Syringe type for easy delivery of the paste into the canal
- Disposable tips for prevention of cross- contamination
- Easy to clean and remove
- Availability to the root canal and protect cross combination

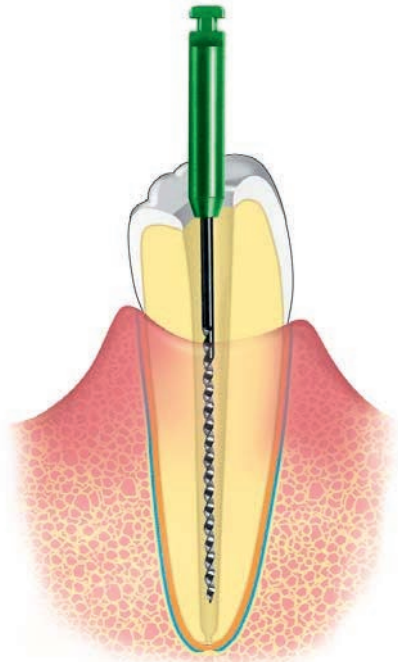
Contents

- 2.2g paste in a syringe
- 20 disposable tips
- One ring rotator for direction control of the tip



Root Canal Preparations

- Before using Endopex, clean and shape the canal using conventional methods.
- Note: the outside diameter of the syringe is approximately equivalent to a **#40 file**.



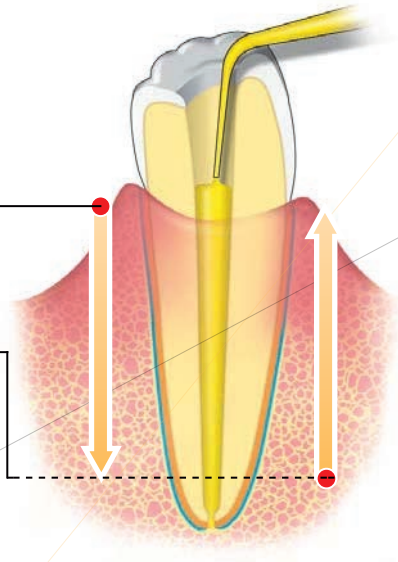
Temporary Intracanal Medicament

Insert the tip of the Endopex syringe into the apical fifth of the root canal length.

By depressing the piston, the paste will begin to reach the apical foramen. At this point slowly withdraw the syringe.

Once the canal is filled with Endopex complete the treatment by placing a temporary restoration to seal the access opening.

Endopex does not set and can be removed during a subsequent visit with liberal amounts of Sodium hypochlorite and a file.



Please Note:

Any Endopex placed beyond the apical foramen will be resorbed over a period of several weeks.

When treating a fulminating abscess any Endopex placed in the periapical tissue will neutralize the acids produced by the abscess; thereby, providing faster relief of acute symptoms.

